

## Sonos Xenon Beacon (5J)

A general purpose, high output xenon beacon designed for industrial applications.

Sonos xenon beacons are weatherproof to IP65 and can be used in all locations both indoors and outdoors.

The Sonos xenon beacon unit utilises a full faced, translucent case giving a much larger lens area. This results in a far greater light spread for more effective warning.

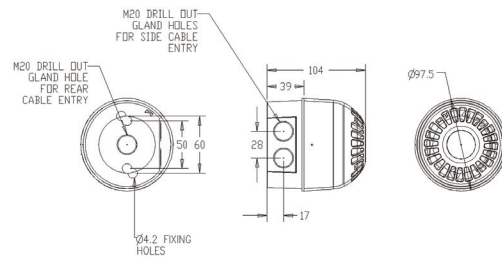
### Features

- High output 5J xenon beacon
- 10-60V DC or 110/230V AC
- Simple 'First Fix' installation
- Weatherproof to IP65
- Synchronised flash (DC version)
- Single/double flash (DC version)
- No surge current

### Lens Colour Options



**Applications** - Industrial alarm



### Specifications

Part No.	Model	Base	Colours	Voltage	Current
PSB-0002	18.98.04.82	Red deep base	Red lens	110/230V AC	70mA
PSB-0004	18.98.04.83	Red deep base	Amber lens	110/230V AC	70mA
PSB-0038	18.98.05.83	Red deep base	Clear lens	110/230V AC	70mA
PSB-0054	18.98.06.45	Red deep base	Green lens	110/230V AC	70mA
PSB-0056	18.98.06.47	Red deep base	blue lens	110/230V AC	70mA
PSB-0033	18.98.0342	White deep base	Red lens	110/230V AC	70mA
PSB-0034	18.98.0343	White deep base	Amber lens	110/230V AC	70mA
PSB-0119	18.98.0347	White deep base	Clear lens	110/230V AC	70mA
PSB-0120	18.98.0349	White deep base	Blue lens	110/230V AC	70mA
PSB-0121	18.98.0340	White deep base	Green lens	110/230V AC	70mA
PSB-0039	18.98.05.84	Red deep base	Red lens	10-60V DC	330mA/24V DC
PSB-0040	18.98.05.85	Red deep base	Amber lens	10-60V DC	330mA/24V DC
PSB-0041	18.98.05.86	Red deep base	clear lens	10-60V DC	330mA/24V DC
PSB-0055	18.98.06.46	Red deep base	green lens	10-60V DC	330mA/24V DC
PSB-0057	18.98.06.48	Red deep base	blue lens	10-60V DC	330mA/24V DC

**IP Rating:** IP65    **Operating Temp:** -25°C to +55°C    **Construction:** Flame Retardant Polycarbonate  
**Cable Entries:** 2 x 20mm cable glands    **Weight:** 0.25kg