

QLEX-SLM series

Explosion Proof LED Work Light



QLEX-SLM series Explosion Proof LED Work Light

- Explosion proof LED work light designed for use in explosive gas environments with Ex d IIC rating
- Enhanced durability with aluminum housing and polycarbonate lens tube
- Semi-permanent service life with long-lasting LED light source
- Features special structure that allows to adjust light angle by turning the light tube
- Materials : Side cover-Al, Lens-PC, Bracket-Al
- Certificates : CE, KCs, NEPSI, S-mark
- Protection rating : KCs - Ex d IIC T6
NEPSI - Ex db IIC T6 Gb (QLEX-SLM-250)
- Ambient operating temperature : $-40^{\circ}\text{C} \leq T_{amb} \leq +60^{\circ}\text{C}$

Specifications

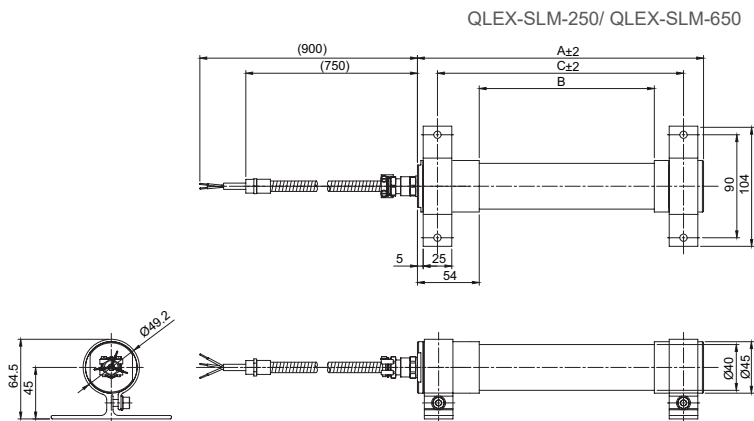
Optics Specifications

Model	QLEX-SLM-250		QLEX-SLM-650	
Lens color	Translucent			
Light color	Cool daylight			
Color temperature	6,000~7,000K			
Efficacy (lm/W)	DC	240Lux	530Lux	

Specifications

Model number	QLEX-SLM-250		QLEX-SLM-650	
Rated voltage	DC24V	AC220V	DC24V	AC220V
Range for operation voltage	DC21.6V-26.4V	AC198V-242V	DC21.6V-26.4V	AC198V-242V
Power consumption	8.6W	9.0W	20W	23W
Insulation resistance	Min. 100MΩ(1,500V AC / 500V DC mega ohm meter)			
Withstanding voltage	DC : 500VAC, 60Hz, 1minute / AC : 1,500VAC, 60Hz, 1minute			
Protection rating	IP66/ 67			
Materials	Side cover : Al, Lens : PC, Bracket : Al			
Certificates	CE, KCs, NEPSI, S	-	KCs	
Weight(approx.)	0.50Kg		0.93Kg	

Technical Diagram



MODEL	A	B	C	BRACKET
QLEX-SLM-250	250	153	-	1EA
QLEX-SLM-650	650	553	613	2EA

Ordering Specification

QLEX-SLM	-	250	-	24
[Model number]		[Length]		[Voltage]
• QLEX-SLM		• 250-250mm • 650-650mm		• 24-DC24V • 220-AC220V



Cautions in use of explosion proof LED work lights

- Contact structure of an explosion proof product must be a qualified part we provide. Please do not disassemble, assemble, modify or repair arbitrarily.